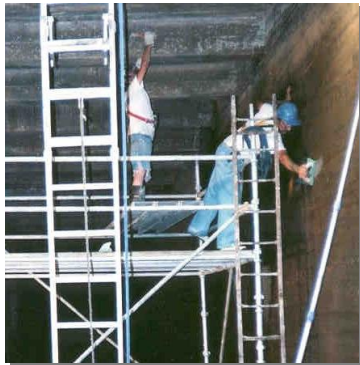


Program Management for the City of Burlingame's Potable Water System Capital Improvements Program

Burlingame, CA



Storage Facility Rehabilitation



Pump Station Rehabilitation

Since 2002, EKI has been serving as Program Manager for the City of Burlingame's Potable Water System Capital Improvements Program (CIP). As Program Manager, EKI extends the resources of City staff by assisting with the establishment and monitoring of budget, cash flow, and expenditures relative to available funding of \$4.55 million per year. EKI manages a team of consultant engineering, design, and construction management firms, including preparation and maintenance of detailed project schedules, technical review of engineering documents, oversight of contract administration, and review of all change orders. EKI also serves as the City's representative during construction and is responsible for managing the public outreach program throughout the planning, design, and construction phases.

As part of its Program Management tasks, EKI performed the following:

- Prepared the Water System Master Plan and 2009 Water System Master Plan Update.
- Assisted the City staff to develop a CIP to address fire flow, water quality, and aged infrastructure, including evaluated options for increasing storage, system consolidation, and pump station replacements.
- Developed demand models for the City to better evaluate alternative projects as well as provide on-going technical support for interface with the Bay Area Water Supply and Conservation Agency.
- Conducted preliminary assessment of groundwater production potential, including well rehabilitation and pumping test analysis.
- Prepared the City's 2005, 2010, and 2015 Urban Water Management Plans.

EKI's other water-related projects for the City has included the replacement of 100,000 feet of distribution mains, construction of a new pump station, the seismic upgrade of a 1-million-gallon storage tank, and the integration of a new Supervisor Control and Data Acquisition (SCADA) system.